

Bite resistant.  
 Exceptional image quality.  
 Exclusive new design.



The Midmark Bite-Resistant DR Sensor is designed for the unique needs of the animal health market. It combines a patent-pending geometric sensor housing design and exceptional image quality to provide clear, crisp radiographs with unmatched resistance to bite damage—FOUR TIMES stronger than our standard sensor.

#### RELIABILITY + DURABILITY

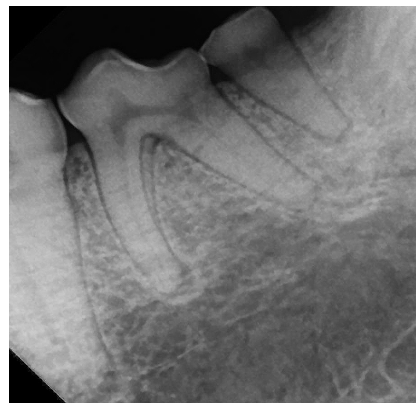
- Eliminates stopping points where damage often occurs, distributing biting force and allowing the tooth to slide off the sensor.
- Imparts a protective plate between the housing and imaging components, further enhancing durability.
- Uses Kevlar®-reinforced cable for reliability and a water-tight connection to promote asepsis.

#### IMAGE CLARITY

- Provides exceptional high-quality images, even when using low-dose radiation.
- Enhances signal-to-noise performance prior to post processing for improved image quality.
- Offers superior image resolution with more pixels per area (pixel size 14 µm).

#### PEACE OF MIND

- Includes embedded calibration files for simplified integration and workflow.
- Includes clinical and technical support and the Midmark five-year limited warranty, with first-time replacement at no charge
- Includes imaging software with practice management integration capabilities.



#### ENSURE YOUR SUCCESS

Learning together and putting new knowledge into practice can give your team greater confidence and competence. Accredited specialists from Midmark Academy deliver comprehensive, RACE-approved, hands-on training in Dental Radiography and Positioning. All of this will help you support better outcomes for your patients.

To learn more, visit  
[midmarkacademy.com](http://midmarkacademy.com)



# MIDMARK BITE-RESISTANT DR SENSOR SPECIFICATIONS

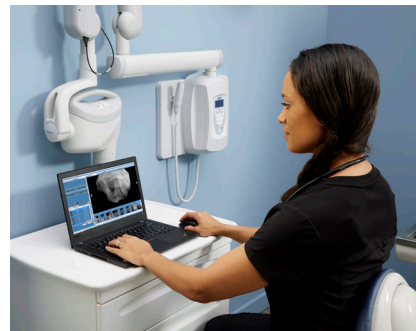
<b>Size</b>	Size 2 only
<b>Active Area</b>	36 mm x 26 mm
<b>Number of Pixels</b>	2,574 lines x 1,852 pixels
<b>Pixel Size</b>	14 µm x 14 µm
<b>Theoretical Resolution</b>	35.7 lp/mm
<b>Levels of Grey</b>	4,096
<b>Saturation Level</b>	532 µGy
<b>Dynamic Range</b>	72 dB
<b>Signal-to-Noise Ratio</b>	89 dB
<b>Sensor Cable Length</b>	Standalone: 3 m Integrated: 1.1 m
<b>Connection Type</b>	USB 2.0, High Speed
<b>External Dimensions (LxWxT in mm)</b>	43.7 x 31.3 x 13.5
<b>Sensor Thickness</b>	13.5 mm (profile improves bite-resistance)
<b>Transfer Speed</b>	3 seconds
<b>Power Supply</b>	+5 V, per USB 2.0 specification
<b>Level of Protection</b>	IP68 (sensor only, per IEC 60529)
<b>Options</b>	Laptop Suite
<b>Limited Warranty</b>	5 years, free first replacement
<b>Midmark Laptop Suite Specifications</b>	<p><b>Operating System:</b> Microsoft® Windows® 10 Professional, 64-bit</p> <p><b>Processor:</b> Intel Core i5/i7 performing at a minimum</p> <p><b>Memory:</b> 2 GHz minimum 3 GB, DDR/DDR2/DDR3</p> <p><b>Graphics Controller:</b> Capable of minimum 1,024x768 resolution</p> <p><b>Monitor:</b> LED Backlit display, size 13 in to 15.8 in</p> <p><b>Ports:</b> At least two USB ports Type-A</p> <p><b>Communication:</b> 1 x Ethernet 10/100 and 1 x Wi-Fi 802.11 g/n</p> <p><b>Weight:</b> 10 lb maximum</p> <p><b>Safety Compliance:</b> UL 62368-1 and CSA C22.2 No. 62368-1</p>
<b>Imaging Software System Requirements</b>	Please visit <a href="http://midmark.com">midmark.com</a> or contact Midmark Imaging Technical Support at 1.844.856.1232 and press 3
<b>Integrated Imaging Management Systems</b>	Midmark Bite-Resistant DR sensors are fully integrated with many imaging management systems. Software and system requirements are subject to change over time. Please work with Midmark Imaging Technical Support to ensure proper integration.

## ORDERING GUIDE

- XSVN-08** Midmark BR IO DR Snsr, Size 2, 1.1M Cable
- XSVS-08** Midmark BR IO DR Snsr, Size 2, 3M Cable
- XSVS-08/L** Midmark BR IO DR Snsr, Size 2, 3M Cable, w/Laptop

## MIDMARK LAPTOP SUITE

A seamless method for converting a practice to digital radiography, the Midmark DR Sensor Laptop Suite includes the Bite-Resistant DR Sensor system along with a laptop



preconfigured for your sensor. The laptop is preloaded with Midmark Imaging Software and Device Suite, and TWAIN client.

## MIDMARK COMPLETE DIGITAL DENTAL RADIOGRAPHY SYSTEMS

Combine the Midmark DC Generator with the Midmark Bite-Resistant DR Sensor for a synergy of technology and efficiency.



Explore our complete radiography systems here:



## COMPANION ACCESSORIES

- 8597** MantaProp, mouth prop, small, box of 10
- 8598** MantaProp, mouth prop, medium, box of 10
- 002-10545-00** Sanitary Sheaths, 100 pack



## MIDMARK ACADEMY DENTAL TRAINING

- 002-1640-10** Gold Package
- VI-RAD** Dental X-ray Positioning Training
- VI-CPC** Cleaning, Probing & Charting Training

Kevlar is a registered trademark owned by E. I. du Pont de Nemours and Company. Microsoft and Windows are registered trademarks owned by Microsoft Corp.

For more information, contact your Midmark dealer or call: 1.800.MIDMARK Outside the USA call: 1.937.526.3662 or visit our website: [midmark.com](http://midmark.com)

© 2023 Midmark Corporation, Versailles, Ohio USA  
Products subject to improvement changes without notice. Litho in USA.

007-10450-00 Rev. A1 (5/23)

