

# iM3<sup>®</sup> | THE GLOBAL NAME IN VETERINARY DENTISTRY

## iM3<sup>®</sup> Radiology Solutions

Leading the way with product innovation, enhanced patient care and the greatest range of ergonomic and customisable equipment, iM3 has all your veterinary dental radiology solutions.

### iM3 Revolution 4DC X-Ray Generator

The Revolution 4DC mobile floor stand allows the unit to be portable and used in multiple locations within the veterinary hospital. The minimal design trolley fitted with hospital grade casters will glide through any standard doors and the inbuilt power cord allows the trolley to connect to a standard power outlet.

#### Installation Versatility



Lightweight, solid arms in extruded aluminum with an integrated self balancing system reduce any risk of tube head vibration during image acquisition. Available in multiple arm lengths available.

#### 360 Degree Swivel

The revolutionary full-swivel ball joint allows the tube head to revolve freely around the sphere so that practically any position can be achieved, including vertical.



A touch-sensitive on/off lock enables effortless repositioning of the tube head between exposures.



Wall Mount: X1100 / X1190

Mobile Trolley: X1300

#### Wireless Control

Handheld wireless control to program the unit from anywhere in the surgery. Full range of intuitive exposure scenarios designed to make correct X-ray acquisition simple.



The Revolution 4DC automatically defines the correct exposure by selecting the region of interest.

### iM3 PORT X IV Portable X-Ray Generator



Weights ONLY 1.5kg!

The PORT-X IV provides total portability combined with the latest digital technology. Ideal for both dental and extremity radiographs with vet specific icons and pre-programmed smart exposure settings.

The Port-X IV combines the latest portable technology with the highest specifications amongst portable dental x-ray generators combined with built in safety features including a lead lined tank assembly and tube.

Port-X IV ORDER CODE: X4000

### X-ray Accessories



#### Dental X-Ray Mat

- 40 cm x 40 cm
- Absorbs radiation, reducing scatter
- Sealed and waterproof

ORDER CODE: XM040



#### X-Ray Positioning Kit

- Size 2, 4 & 5 plate bite protectors
- Adjustable bisecting angle guide
- Positioning instructions for full mouth series in cats, dogs & rabbits

ORDER CODE: X8500

# iM3® Radiology Solutions

*Leading the way with product innovation, enhanced patient care and the greatest range of ergonomic and customisable equipment, iM3 has all your veterinary dental radiology solutions.*

## CR 7 VET

X-Ray Scanner



- Fast processing times, 12 sec. for size 2 plate
- Highest Resolution 40 LP/mm theoretical, with 25 LP/mm actual
- Incredibly compact at 23cm x 24cm. Weight only 6kg
- Unique design protects unit and radiographs from dust, hair, and particles that reduce image quality
- Plate Feeder accepts all image plate size from 0 - 5 including
- R3 Rabbit Plates, and is easily removed for cleaning

ORDER CODE: X7000

## CR 8 VET

X-Ray Scanner



- Twice the scanning speed with 2 parallel plate slots
- Highest Resolution 40 LP/mm theoretical, with 25 LP/mm actual
- Adjustable resolutions allows for fast scanning times. Up to 4 x size 2 image plates can be read in as little as 25 seconds
- High resolution glass touch display, patented PCS technology for excellent image quality
- The largest range of plate shapes in the veterinary dentistry market

ORDER CODE: X8101

## DR Sensor

X-Ray Sensor



- Highest Resolution 26.3 LP/mm theoretical, with 20 LP/mm actual
- Increased volume and eliminates need for dark room
- Instantaneous image acquisition displayed on screen in seconds
- CMOS technology ensures the fast transmission of high-resolution images
- The optimized digital images can be shared directly with other users and easily archived.
- Multiple sizes, large format DR Sensors now available

ORDER CODE: X5000

*Only at iM3 can you find the complete range of veterinary dental images plates, in true and accurate sizes.*

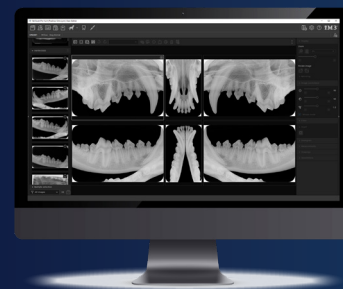
iM3 Plates are the largest range of plate shapes available to the veterinary dental market, and are for use specifically on iM3's CR 7 and CR 8 scanners. Size 5 intra oral image plates are a must for canine dentistry and are exclusive to iM3.

iM3 created the R3 plate for scanning small animals such as Rabbits. This R3 plate is for use on both our CR 7 and CR 8 scanners, and are the only scanners worldwide with a scanning plate for Rabbits.



*Introducing the NEW size 6, with great potential for long snouted dogs, extremities, and small exotics.*

## Veterinary Software



### Vet-Exam PRO

Dental Software

The fast, reliable and modern veterinary dental x-ray software, that pairs perfectly with the iM3 CR7 & CR 8 Vet Scanner.

- Veterinary specific layouts
- Integrated capture & viewer allows for immediate comparison between x-rays
- Images are automatically saved in the background
- Full DICOM compliance